

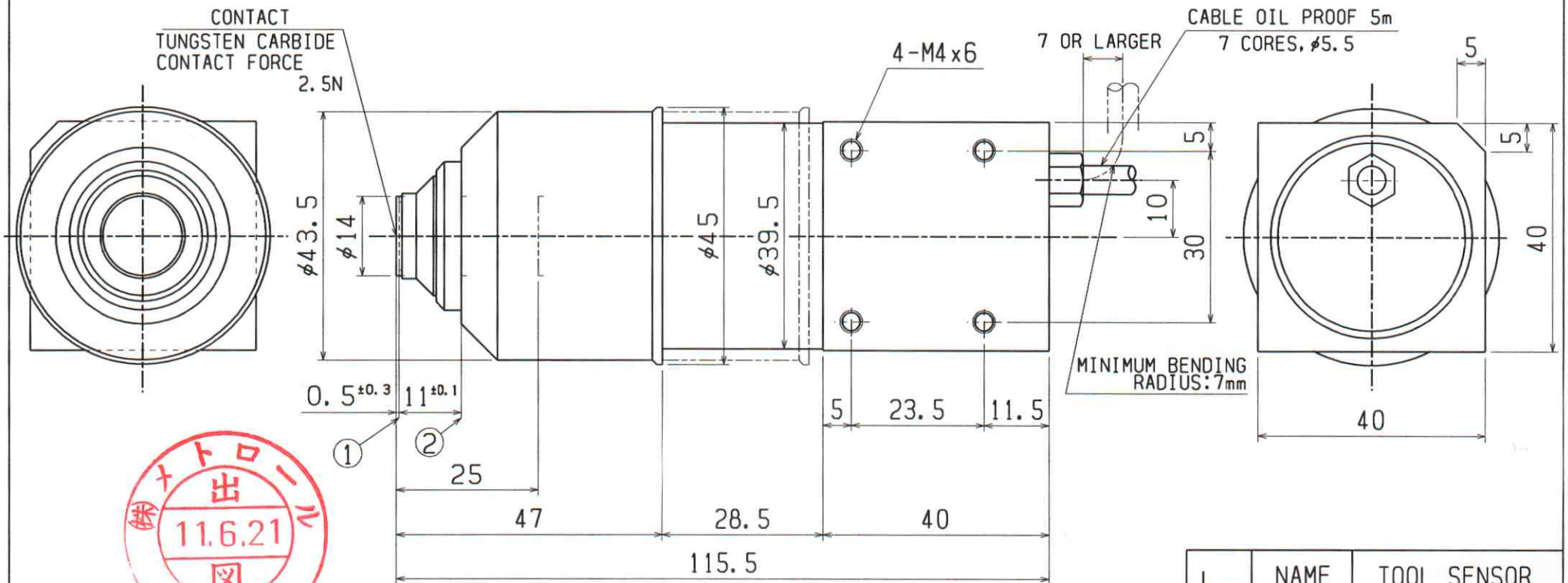
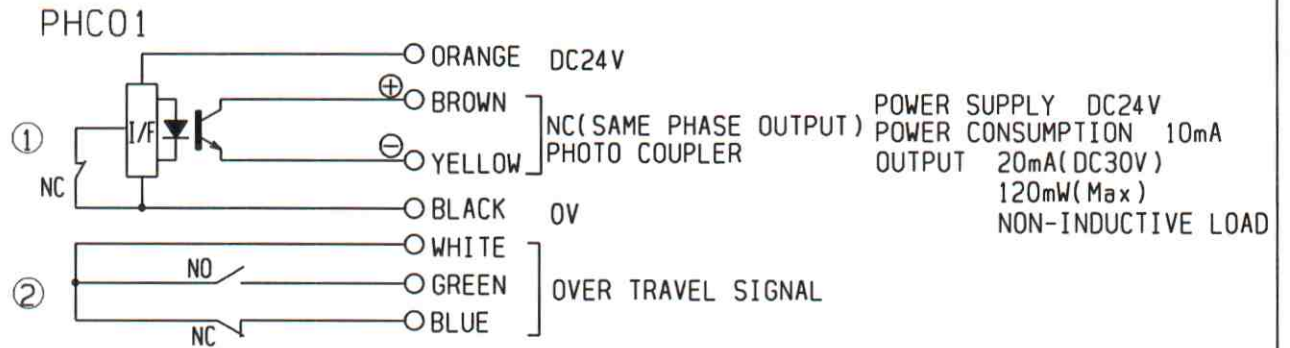
① SKIP SIGNAL

OPERATION MODE : NORMALLY CLOSED
 REPEATABILITY OF SKIP SIGNAL : 0.001mm
 RECOMMENDED OPERATING SPEED : 50-200mm/min

② OVER TRAVEL SIGNAL

MICRO SWITCH
 CONTACT RATING : DC24V 100mA(NON-INDUCTIVE LOAD)
 OPERATION MODE : NORMALLY OPEN
 OPERATION MODE : NORMALLY CLOSED

DEGREES OF PROTECTION : IEC IP67



APR	CHK	DRA
<i>Am</i>		03.3.25 HIJIKATA

	NAME	TOOL SENSOR
	DRAWING NUMBER	T24D-03
1/1		METROL